



Technical Specifications 2023

Contents

Contacts	2
Seating Capacity	2
Access.....	2
Stage Information and Dimensions	3
Backstage Crossover.....	3
Flying Information	3
Stage Equipment	3
Soft Masking.....	3
Hard Masking	3
Other Stage Equipment	4
Orchestra Pit	Error! Bookmark not defined.
Stage Management.....	4
Control Position.....	4
Wardrobe	4
Dressing Rooms.....	4
Lighting.....	5
Touring company power	5
Control Equipment.....	5
House Lighting.....	5
Dimmers	5
LX Rig.....	6
Rigging Information.....	6
Sound.....	6
Mixing position	6
Permanent Sound Rig	6
Microphones	6
Appendix A – Seating Plan.....	8
Appendix B – Building Plan	10
Appendix C – Stage Plan (not to scale).....	11

Contacts

All technical queries from visiting companies should be directed to the following:

Technical Co-Ordinator

Megan Sheeran m.sheeran@ulster.ac.uk 028 701 23376

Theatre Manager

Roseanne Sturgeon r.sturgeon@ulster.ac.uk 028 701 23387

Operations/FOH

Shaun Kelly s.kelly1@ulster.ac.uk 028 701 23123

Website: riversidetheatre.org.uk

Address: Riverside Theatre, Ulster University, Cromore Road, Coleraine, BT52 1SA

Seating Capacity

Riverside Theatre has several seating configurations, please discuss chosen configuration at contract stage.

Proscenium max 262

The following number of seats will be lost for:

Auditorium sound desk outside control room (lose disabled seating)	2 seats
Auditorium follow spot position (lose disabled seating)	2 seats

If you require seats to be held off sale, you must notify us as far in advance as possible. We may not be able to hold seats once they are on sale. This is normally agreed at the contractual stage. For seating plan please see Appendix A.

Access

The Riverside Theatre's dock door is accessed via the lower carpark, next to the theatre. The doors are at street level and give level access to the stage.

Daytime access to backstage must be through stage door which is located next to the dock doors. Opening times of stage door vary dependant on show so please check times whilst you are with us.

Stage Information and Dimensions

The stage floor is predominantly concrete, painted black, it is possible to screw into it at intervals across the stage where wooden battens are flush with the concrete. It can be painted as necessary but must be reinstated back to normal as part of the get out and at cost to the visiting company.

Due to the nature of the floor stage traps are unable to be installed.

Proscenium width	10m
Proscenium height	
Front of stage to back wall	9.8m
Setting line to back wall	7m
Clearance under bridges (SL/SR/DS)	

Dock door is located USL at stage level, double doors open into the dock.

SR and SL the additional thrust seating banks are permanently located in the wings, reducing wing space.

Backstage Crossover

There is a clearance, through the dock that is our backstage crossover. It can be accessed through double doors from either wing.

Flying Information

No flying facilities at present

Stage Equipment

Access Equipment
 1x Tallescope
 1x Zargees
1x Genie Lift

Soft Masking

Black Tabs: Full stage width, split centre. Fixed position: Up-stage

Blue House tabs are located on the setting line and can be operated from the control room.

Hard Masking

A selection of hard black maskers are available of various heights and widths

Other Stage Equipment

Loose stage equipment available for use:

- Scenery braces and stage weights
- Conduit
- Scaff (assorted lengths)
- Treads (assorted)
- Props tables

We also have a stock of staging, wooden dance floor and vinyl dance floor available. **Please note charges will be made for all stock hardware used and not returned on get-out.**

Stage Management

No prompt desk or cue light system.

Calls system to FOH and show relay control from control room.

There are comms points located USL/USR and in Control room. We have a limited stock of belt packs and headsets so please advise us in advance how many comms will be required on stage. We do not own a wireless comms system.

Control Position

The control positions are situated at the rear of the auditorium in control box.

LX control is in an enclosed box with a large window.

Sound position is in control box with window removed.

Window is available if enclosed control room is required. Please advise in advance.

Wardrobe

There is a laundry room on the upper-level corridor with a sink, ironing board and iron available. There is one 7kg washing machine and one 8kg tumble dryer. We ask that only liquid detergents are used in our washing machine. The visiting company must provide this.

We have a small stock of rails available for use on stage or as extra rails in dressing rooms. There is also a selection of flattage available to build additional quick-change areas.

Dressing Rooms

Dressing rooms are all accessed from SL up backstage stairwell. All dressing rooms contain at least one sink. The rehearsal room can be used for larger companies (please advise in advance to ensure vacant for duration of stay)

Floor	Room	Capacity	Facilities
Stage Level	DR5/Quick Change	1	Sink and hand dryer
	Rehearsal room		Mirrors
Lower Level	DR1	10	2x sink and hand dryer
	DR2	10	2x sink and hand dryer
	DR3	2/3	Sink and hand dryer
	DR4	2/3	Sink and hand dryer
Opposite DR			
	Male toilets		3 cubicles
	Male showers		2 cubicles
	Female toilets		3 cubicles
	Female showers		2 cubicles
	Access to auditorium		
Upper Level			
	Green Room		Drinking water, sink, microwave, fridge, kettle and toaster
	Offices		
	Laundry room		

Lighting

Touring company power

1x 32A single phase supply located USL

1x 63A three phase supply located USL

Control Equipment

1 x ETC ION

House Lighting

Auditorium lighting is operated from control panel located in control room.

The stair lighting is kept on throughout the show, causing minimal illumination on stage. We cannot extinguish the emergency lighting including fire exit signs for any performance, but the lighting levels are very low and are suitable for onstage blackouts.

The light levels for house lights as the audience enter has been agreed for the safety of the audience and cannot be adjusted to a lower level whilst audience are moving in the auditorium.

Dimmers

Our dimmers are Strand Wallrack and on a chord patch. Please contact in advance if a pre-rig is required or any changes to our standard rig are necessary.

House lights cannot be controlled by the dimmers.

There is a DMX splitter on front bridge for Universe 2.

LX Rig

We have a rig consisting of two full stage washes, back light and side, LED wash lights also provide full stage colour washes. There are several profiles on the FOH bridge to provide fixed spots. Please call to discuss the lighting requirements for your show.

Rigging Information

There are two bridges, one FOH, one over stage.

We own 2 boom bases and a variety of lengths of scaff and arms.

PLEASE NOTE – NO OVERHEAD BARS OR HANGING AVAILABLE

Please contact Technical Coordinator with rigging requirements.

Sound

Mixing position

There are three mixing positions available:

1. Control room, centre, rear of auditorium with window removed
2. Auditorium Left, rear of auditorium, requires removal of disabled seating
3. Auditorium Right, rear of auditorium, requires removal of disabled seating

Please advise in advance if auditorium positions are required.

Permanent Sound Rig

2x KV2 Audio EX12 Active Speakers

2x KV2 Audio EX2.2 Dual 12" Sub

4x Logic LM8 Monitors

Allen and Heath Qu-24 (control room) with digital stage box (SR)

Amps

2x ECLER DPA 1400 Amplifier for monitors, two channels per amp

Microphones – cost associated

1 x Sennheiser ew500 G3 Radio Mic System

8 x Sennheiser Belt Pack

4 x Sennheiser Handheld

8 x clip on lapel mics

6 x Shure SM58

2 x Shure SM57
4 x Crown PZM
Shure PG Drum Mic Kit
 1 x PG52
 3 x PG56
 2 x PG81

Piano – cost associated
Yamaha baby grand
2x upright pianos

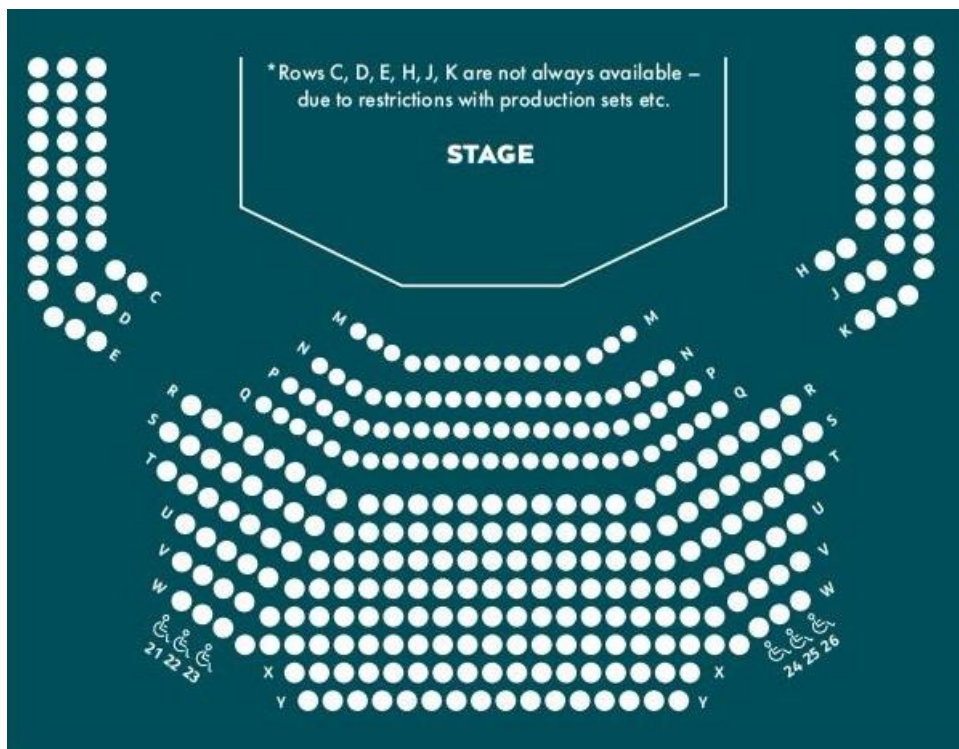
Other Sound Equipment
Various lengths of XLR
Various lengths of Speakon
9 x Pulse DI Boxes

Video

Projector – cost associated
NEC 8,200 lumen PA804UL Laser Projector located on FOH catwalk

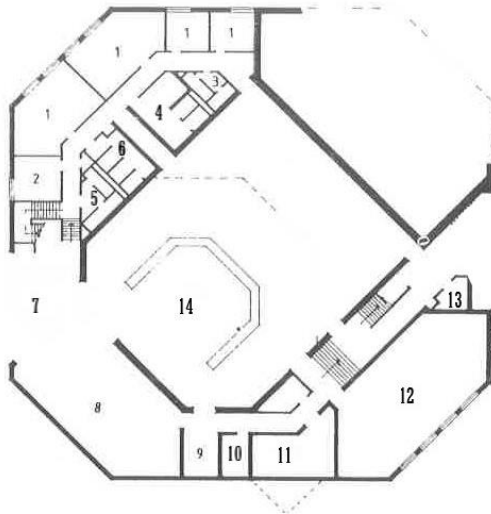
Screen
White cyc located on US wall
Fast fold screen

Appendix A – Seating Plan



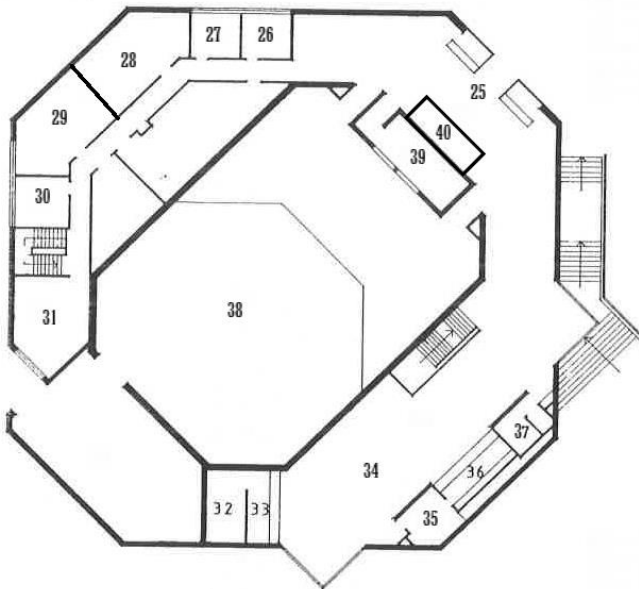
Appendix B – Building Plan

**Building Plan
Lower Level**



1. Dressing Room
2. Storage
3. Male Showers
4. Male Toilets
5. Female Showers
6. Female Toilets
7. Store
8. Workshop
9. Store
10. Quick Change
11. Plant Room
12. Rehearsal Room
13. Cleaner
14. Auditorium

**Building Plan
Upper Level**



25. Main Entrance
26. Female Toilets
27. Male Toilets
28. Technical Co-Ordinator
29. Administration
30. Theatre Manager
31. Green Room
32. Store
33. Truva
34. Foyer
35. Bar Store
36. Bar
37. Disabled Toilet
38. Auditorium
39. Control Room
40. Box Office

Appendix C – Lighting Plan (not to scale)

Riverside Theatre
LIGHTING PLAN 2022

DI

RIVERSIDE TH

COLERAINE 0265 441

SCALE 1:100

